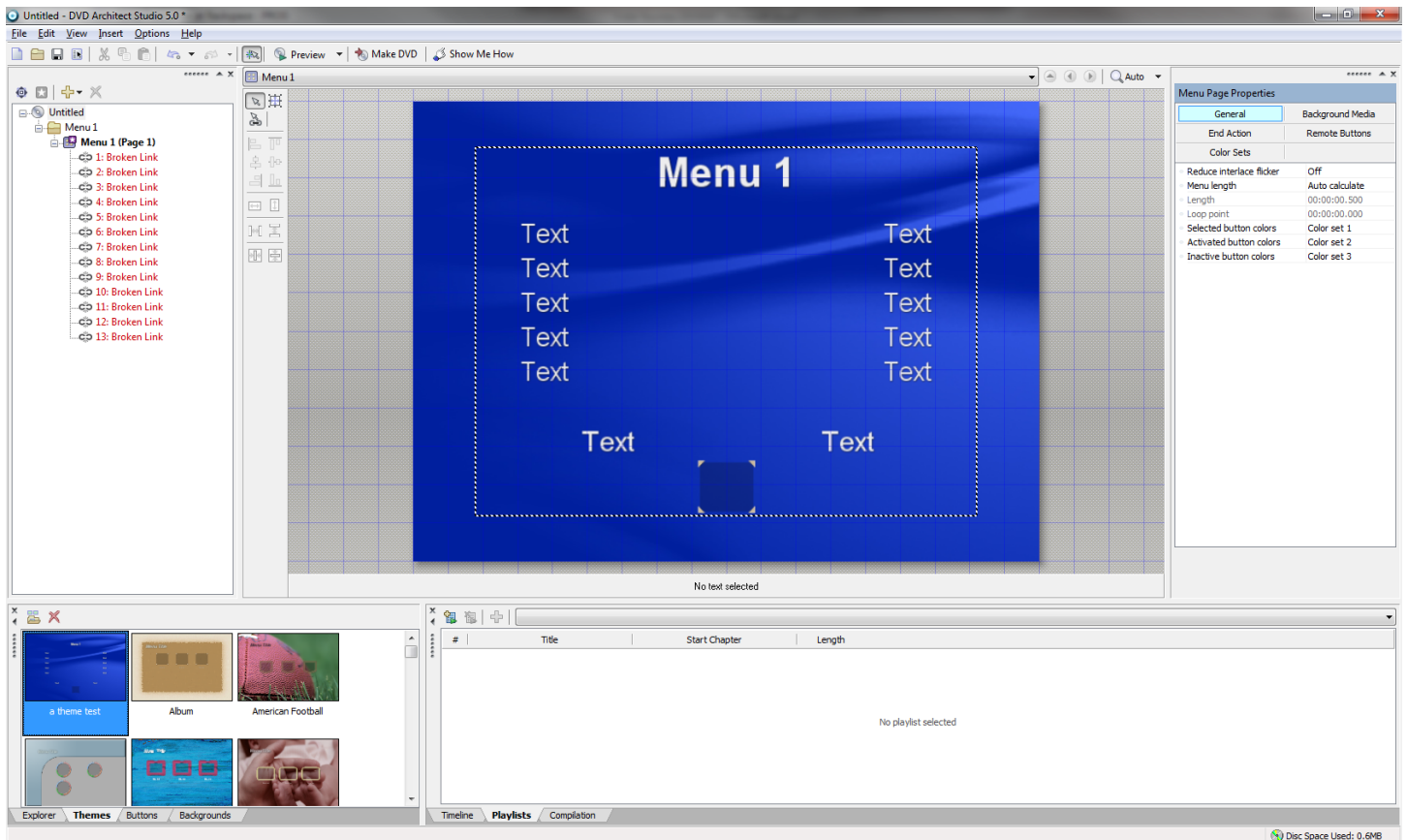


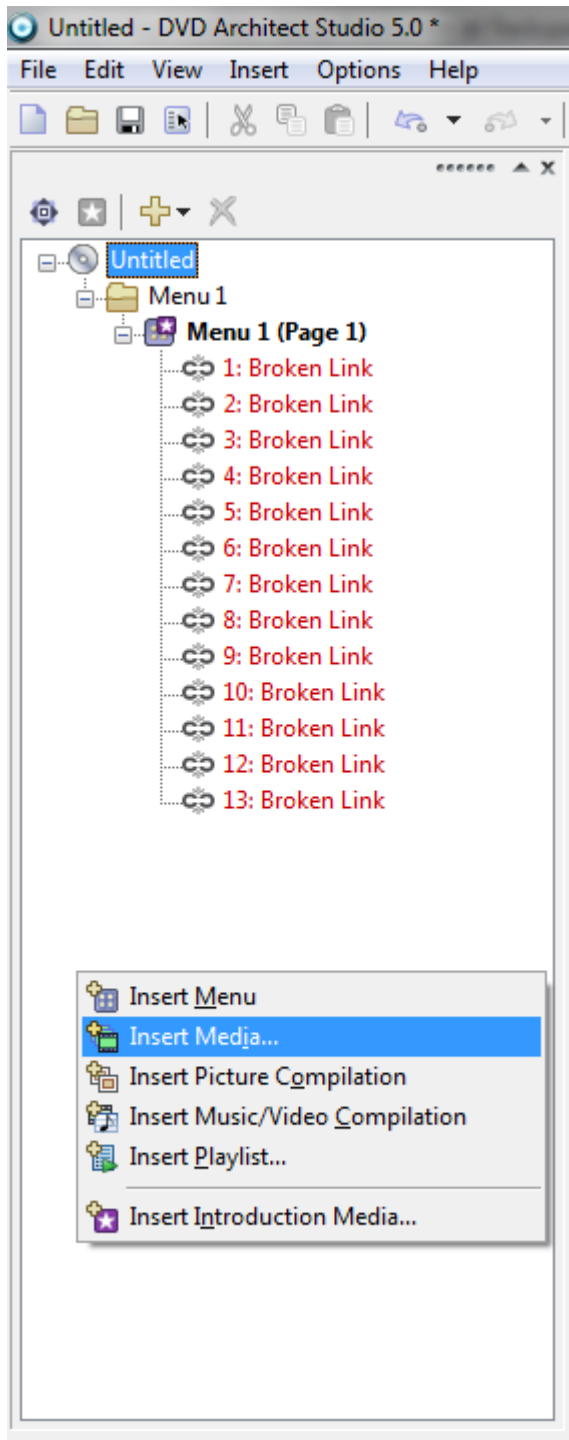
Using Playlists and Menu Themes

Step 1: Start a New Project and apply your theme



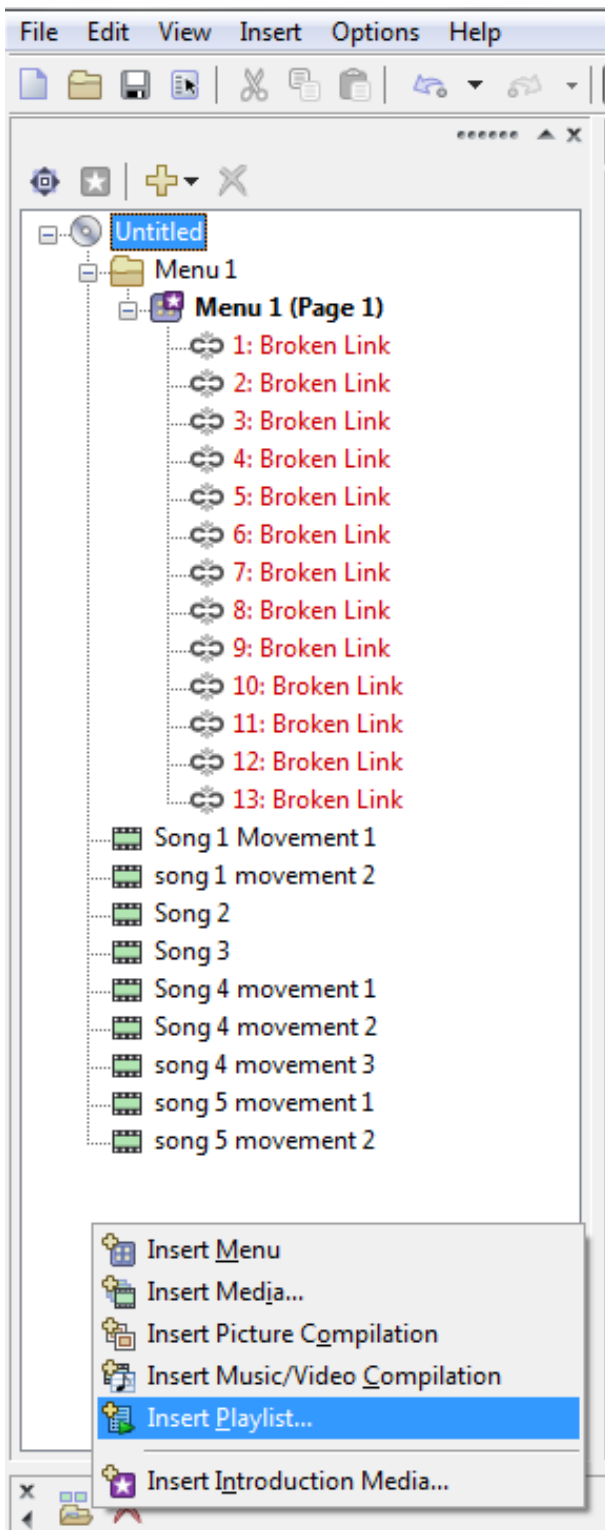
Your menu will be replaced with your saved template, and the buttons will all appear as broken links.

Step 2: Right-click in the Project Overview panel and choose Insert Media

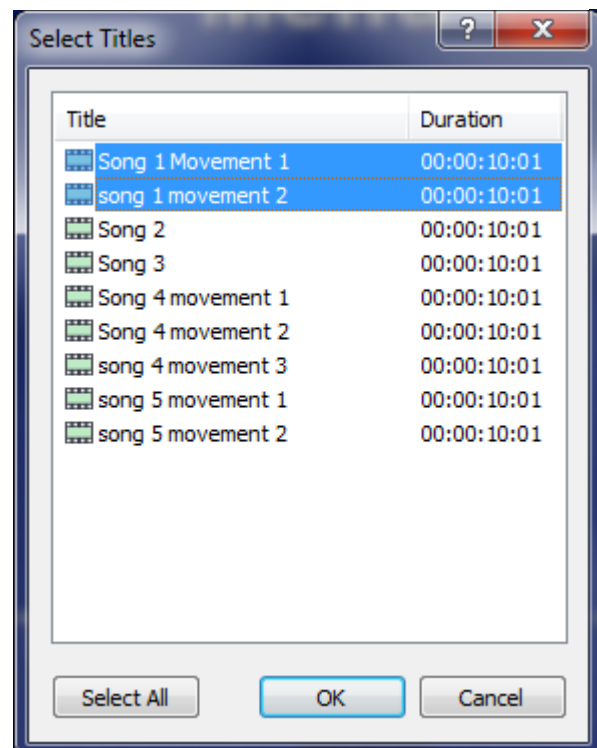


Import all song and movement media files into your project this way, without attaching them to the menu.

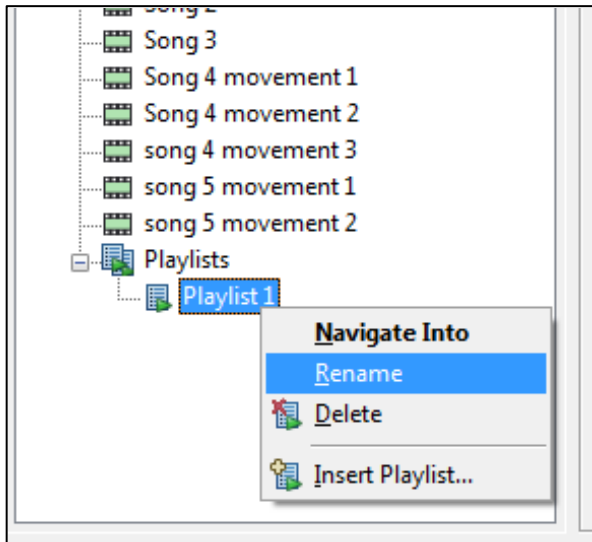
Step 3: Right-click in the Project Overview panel and choose Insert Playlist



This opens a small window that allows you to select the files to include in the playlist. In this example screenshot, I'm creating the full video for song 1 by adding movements 1 and 2.

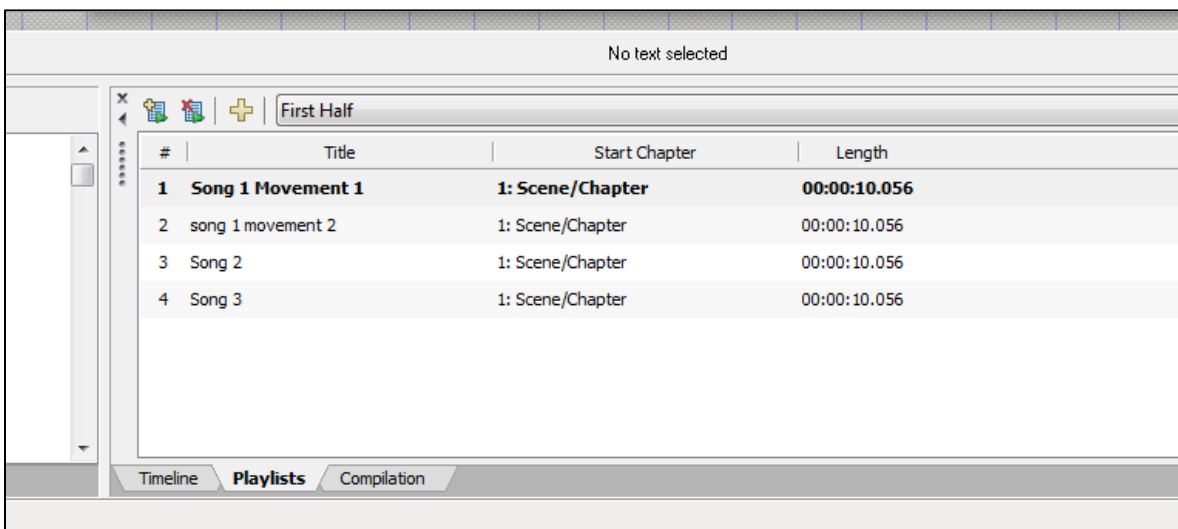


Step 4: Right-click the Playlist to rename it

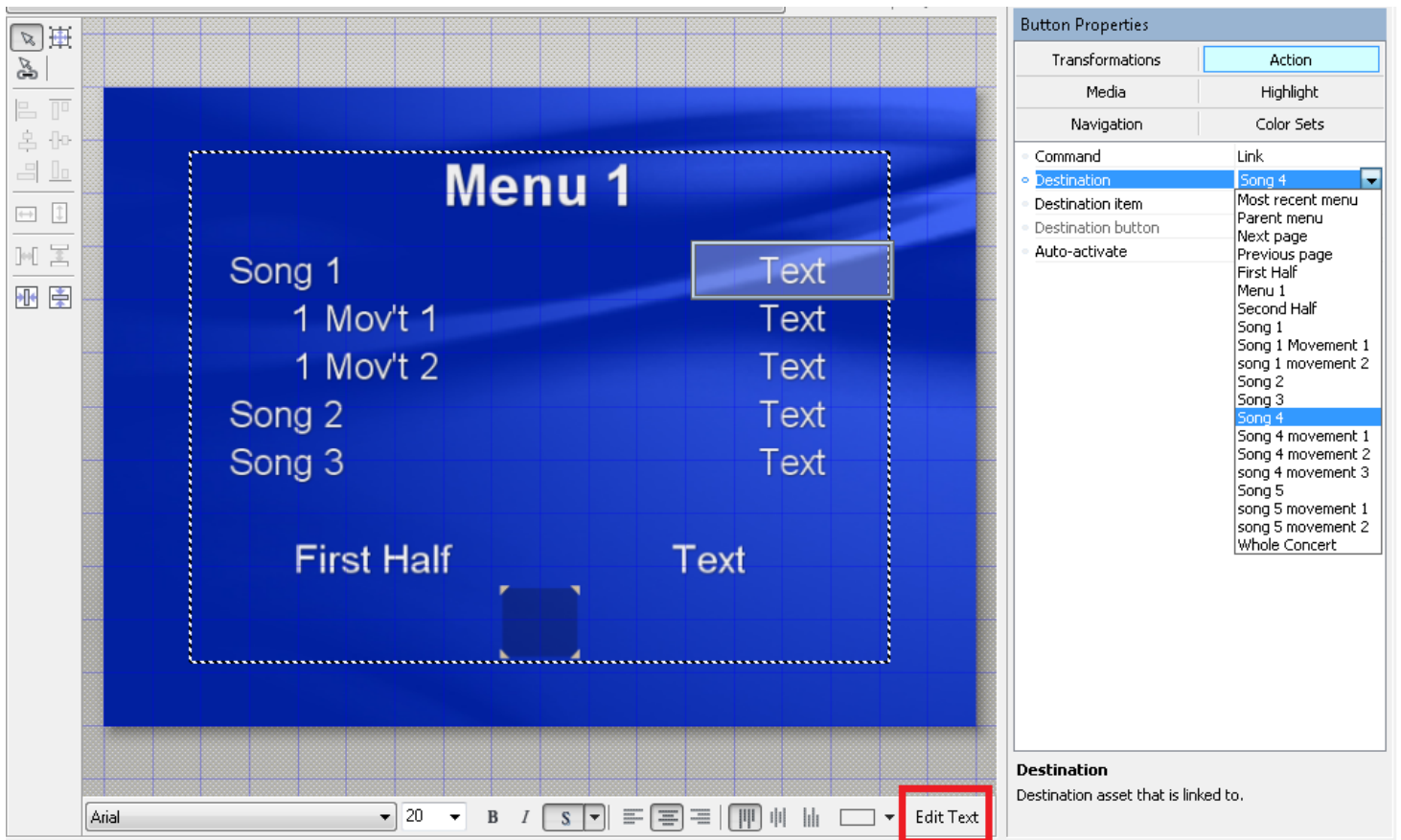


Do this for each playlist as you go to avoid confusion later

Note: You can always edit the playlists in the Playlist panel at the bottom of the screen



Step 5: Connect and rename the buttons



Left-click a button on the menu to select it. Open the Action tab on the upper right, and select a media file or playlist from the Destination drop-down menu. Then click on Edit Text to rename the button.

Step 6: Adjust the project as needed

You may need to add or remove buttons (copy and paste existing buttons to match the formatting) or modify the layout to accommodate each concert. You can also make creative changes, like picking a new background image.