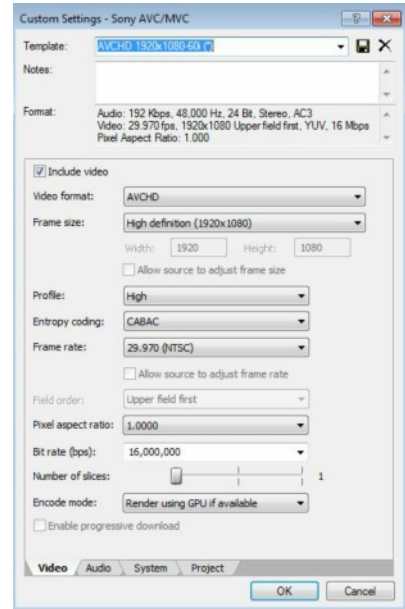


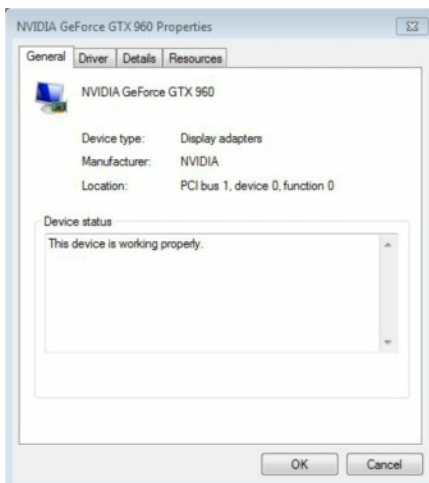
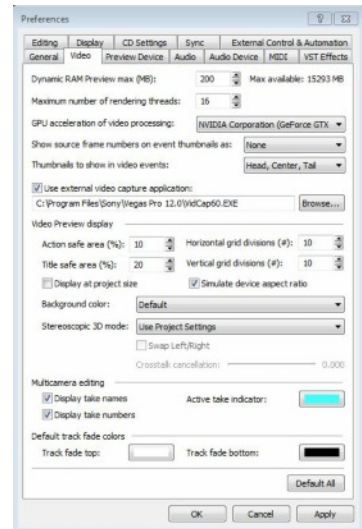
I'm hoping you can help with my problem with my GPU. I've been trying to get Sony Vegas Pro ver 12 to recognize it. I first went to custom settings on the video tab and set encode mode to use GPU.



When I go to the systems tab and check GPU it says no GPU available.



If I look at the preferences I can see my card can be selected.



When I go into the system manager it shows the card is working properly.

I have updated both the card and vegas pro. Still I can't get it to work.